

Accessibility Guide for Ort Gallery

info@ortgallery.co.uk | 07938 428394 | www.ortgallery.co.uk

Contact for accessibility enquiries:

Josephine Reichert | josie@ortgallery.co.uk

Contents

Welcome	2
At a Glance	2
Level Access	2
Access with steps	2
Visual	2
Getting here by public transport	3
Parking	4
Arrival	5
Path to main entrance	5
Main entrance	5
Path to accessible rear entrance	6
Accessible rear entrance	6
Floor Plan	8
Disabled toilets	9
Inside Ort Gallery	10
Visual Impairment	11
d/Deaf Visitors	11
Neurodivergent Visitors	11
Transgender & Non-binary Visitors	12

Welcome

Ort Gallery is an artist-led exhibition space in Balsall Heath, Birmingham. We have been based in the community since 2012 and exhibit ambitious artwork that asks difficult questions. We use art as a tool to facilitate dialogue in our community, break down barriers to engagement, support people to take part in cultural activity as well as social mobility through our engagement programmes.



Accessibility is very important to us and we strive to be as accessible as we can be. Please get in touch if you have any questions or suggestions for improvement.

At a Glance

Level Access

Ort Gallery has step-free access via the rear entrance.

Signage is currently lacking and we are working with our landlords to speed up this process. We acknowledge that the lack of signage and the separate entrance for level access is not ideal. There are restrictions of the building we are based in and the landlords who own it. We are actively working on a better long-term solution.

Access with steps

The building can be accessed from the main entrance (from Moseley Road) which has 10 steps with no handrail.

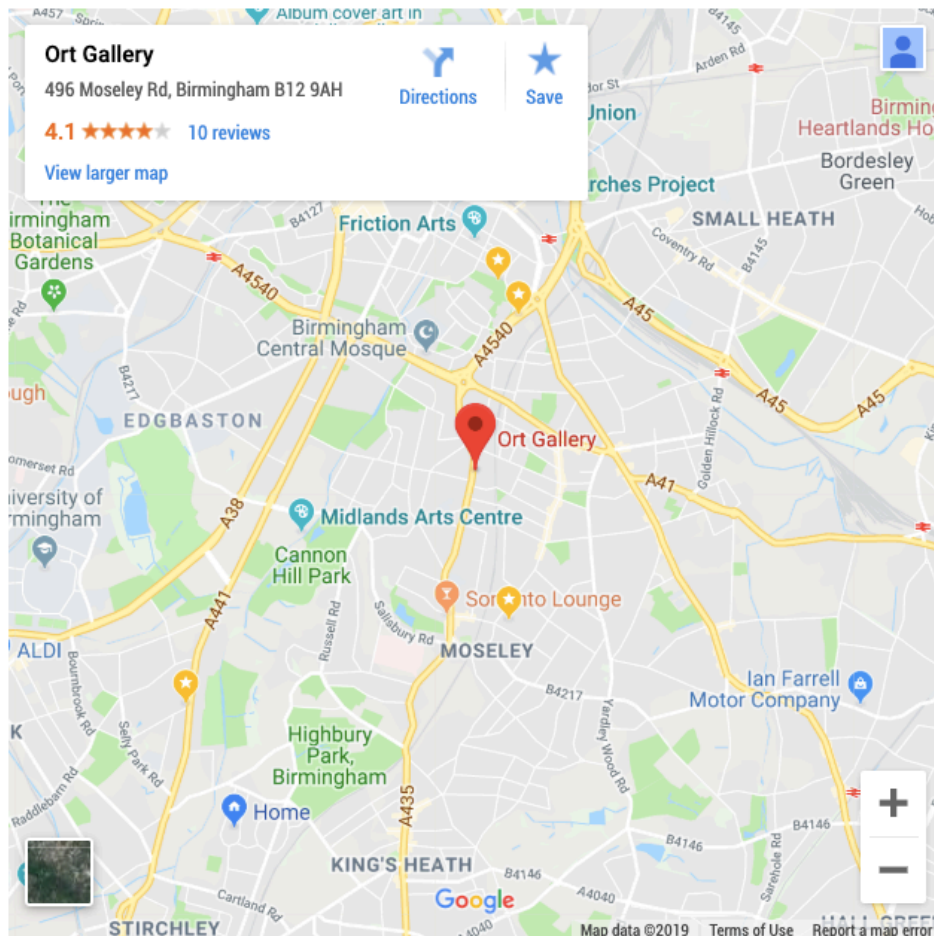
Visual

The walls and the doors have high colour contrast (Green and White).

Getting here by public transport

496 Moseley Road
Balsall Heath
Birmingham
B12 9AH

- You can get to Ort Gallery by bus.
- Ort Gallery can be easily accessed via the number 50 or 50A bus, from Birmingham city centre, Moseley, Kings Heath, Maypole and Druids Heath. The bus stop is 0.05 miles from Ort Gallery.
- Ort Gallery is situated inside Moseley Community Hub based at The School of Art building, on the upper ground floor.
- You can get a taxi with Moseley Radio Cars by calling 0121 449 2222. The taxi company has a wheelchair accessible vehicle.



Parking

- There is parking at the back of the venue which can be accessed from Lime Grove. Parking is free.
- There is a drop-off point at the main entrance. The drop-off point has no dropped kerb.
- There is parking just outside Ort Gallery on Moseley Road (1 hour parking between 1:00 pm - 4:30 pm Monday-Friday). There is also street parking on the roads near the gallery on Clifton and Edward Road. Please do not leave valuables in your car.

Entrance to accessible car-park



Car Park



Arrival



Path to main entrance

- To get to Ort Gallery from both bus stops is a 100ft journey from town and 300ft journey from South Birmingham. There is a traffic light controlled crossing nearby and dropped curbs.
- From the street (Moseley Road) to the main entrance, there are 10 steps.
- There is no hand rail.



Main entrance

- The door is 1480mm wide.
- The main entrance has 10 steps.
- The main entrance to the building and the Ort Gallery entrance are always kept open during opening hours (Wednesday - Saturday 12:00 - 5:00pm)



Main entrance (from street) > Main entrance (double doors) > Main building foyer

Path to accessible rear entrance

- Access from the street (Lime Grove) to the accessible rear entrance is step free and an additional 100ft journey from the main entrance.
- Access from car park to the accessible rear entrance is step free.

Accessible rear entrance

- The door is 1480mm wide.
- The accessible rear entrance has 1 step.
- There is a portable ramp for access into the building.
- The rear entrance to the building is kept open during building opening hours (Monday - Friday 9:00am - 5:00pm). If it is not open please ring the bell or call 07938 428394.
- For support using the ramp please ring the bell or call 07938 428394
- There are a further 10 steps with handrails on both sides to get from the lower ground floor to the upper ground floor where the Ort Gallery entrance is located.
- There is a lift for step free access. Please press button "1" to reach the upper ground floor.
- **PLEASE NOTE:** There is a tight turning circle from the corridor into the lift space. This door has a width of 75cm.



Accessible Rear entrance



Portable Ramp

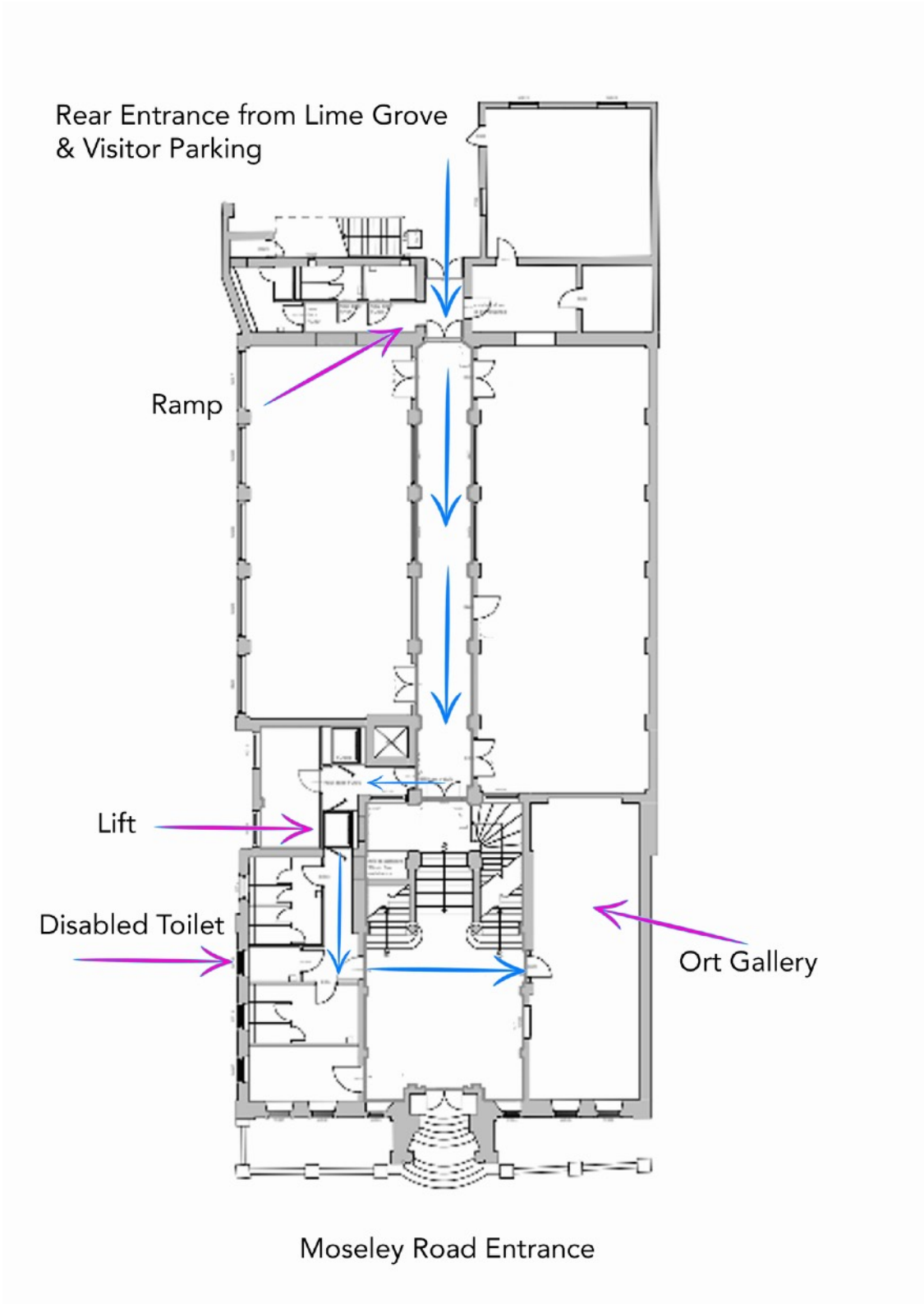


Entrance to the lift



Press button "1" for the Ort Gallery entrance level, button "0" to return to the lower ground floor where the car park is located, the button has to be pressed for the entire journey

Floor Plan



Disabled toilets

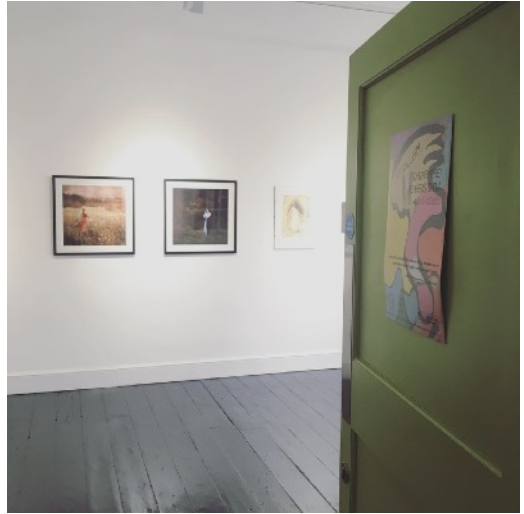
- Step free and extra wide disabled toilets with hand rails are located on both the lower ground floor next to the accessible rear entrance and on the upper ground floor near the exit of the lift.
- Toilets are signposted.
- Unfortunately, currently there are no hoists or changing stations available.
- Unfortunately, currently there are no gender neutral toilets available.



Disabled toilet on the upper ground floor, 5 metres away from the Ort Gallery entrance.

Inside Ort Gallery

- There is a sign outside the gallery reading 'ORT GALLERY' made of wood and dark grey paint.
- There are seats inside the gallery and display information is low, for wheelchair users.



Ort Gallery is signposted through a wooden sign with dark grey paint and the entrance is painted in bright green

Visual Impairment

- We have high colour contrast between walls and doors.
- We have LED spotlights in the gallery.
- We print interpretation material in font size 22 minimum.
- This guide is available in large print.
- We offer printed paper documents on different colour backgrounds. Please let us know what your needs are.
- We are happy to provide a water bowl and breakout room for guide dogs.
- The nearest park to Ort Gallery is Pickwick park which is 0.5 mile away.
- We have concrete plans to include audio description to future exhibitions.



d/Deaf Visitors

- We have concrete plans to include BSL interpretation and transcription to all future events (where the budget allows).



Neurodivergent Visitors

- We strive to be an accessible venue where everyone feels welcome. We do not have a dress code or behaviour code we expect our visitors to follow. We are open to visitors behaving in a way that might be understood to be "inappropriate" behaviour in other galleries - we are happy for you to touch the art work, for you to behave as you would like and for you to take the time you need. Please respect the art work and do not damage it.
- Quiet spaces will be found if available on request and can be requested ahead of time.
- All our exhibitions are free of charge.
- We have special relaxed events for people who are neurodivergent or prefer visiting the gallery outside of opening hours. We also offer extended opening hours and tours on request. We are always happy to adjust the sound and lighting for visitors.
- We offer printed paper documents on different colour backgrounds. Please let us know what your needs are.
- For all our exhibitions we have a virtual gallery tour which can be viewed at any time from anywhere.
- We have concrete plans to include live streaming or video documentation and transcription for future events.

Transgender & Non-binary Visitors

- We are an inclusive venue and actively support transgender and non-binary people. We have a zero tolerance policy in regards to discrimination and would not hesitate to ask someone to leave immediately if they use discriminatory language or behaviour.
- We are actively working towards becoming a space that respects and empathises with all people encouraging our visitors, staff and volunteers to bring their whole selves in.
- Toilets: We have a Ladies, a Gents and a Disabled toilet. There are no gender neutral toilets in our building.
- We are based in an old building that is not owned by us. Whilst we work with our landlords to make the space more accessible there are delays we cannot speed up. We acknowledge that this is a serious issue and we are working on providing our staff and audiences with more accessible facilities.
- Most our events finish by 7pm so as to ensure people have time to get home before it gets dark. We also endeavour to live stream events whenever possible. If you are worried about getting home after an event please speak to us ahead of the event or at the time and we will support you with care and empathy.

We are always happy to receive feedback on our accessibility, please email josie@ortgallery.co.uk or call 07938 428394.